



2.5 Gigabit PCIe Network Adapter



TX201



Blazing-Fast 2.5 Gbps
Networking



Multi-Speed Compatibility



Low-Profile Bracket

Highlights

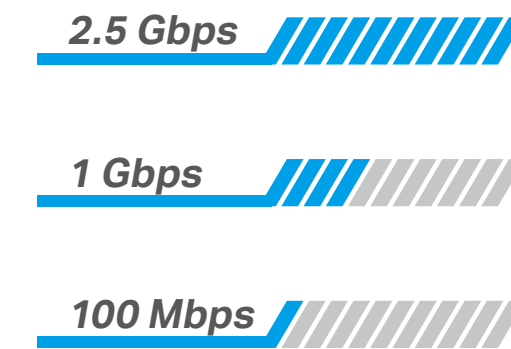
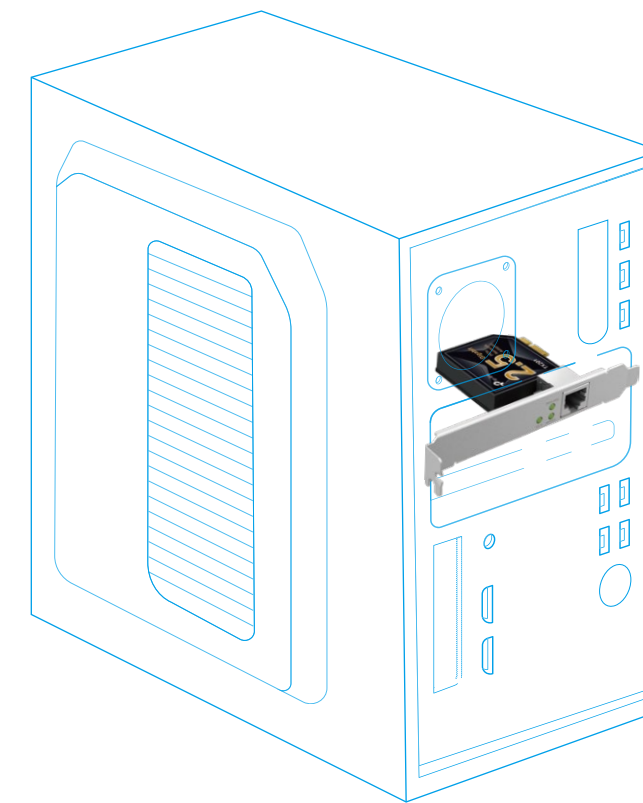
Blazing-Fast 2.5 Gbps Networking

TX201 delivers extreme speeds of up to 2.5 Gbps, which is 2.5× faster than typical Gigabit adapters, guaranteeing smooth data transmissions for all your bandwidth-intensive tasks.



Versatile Compatibility

With extreme speed and ultra-low latency, 2.5GBase-T is backwards compatible with Fast Ethernet and Gigabit Ethernet, automatically negotiating between higher and lower speed connections.

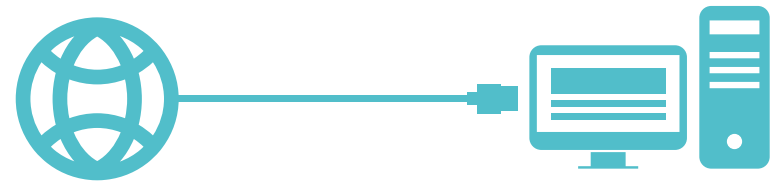


Multi-Speed Compatibility

Highlights

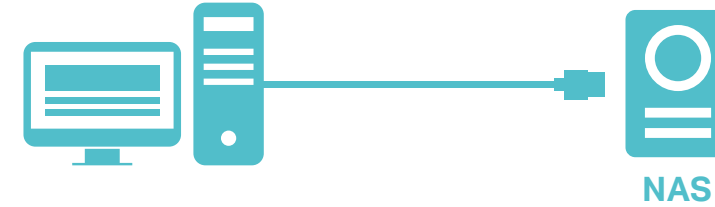
2.5 Gbps Internet Access

Make Full Use of Your High-Speed Internet Access



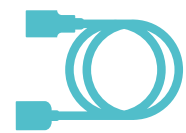
2.5 Gbps NAS Connection

Lightning-Fast Local Data Transmissions



Wake on LAN

Remotely power on/off your computer with WOL, good for centralized management.



Lower Wiring Costs

You don't need a costly fiber cable network to reach speeds up to 2.5 Gbps. A low-cost CAT5e Ethernet cable will do the trick.



Low-Profile and Full-Height Brackets

In addition to the standard bracket, a low-profile bracket is provided for mini tower computer cases. Customized options give you the flexibility to find a bracket that perfectly fits your board design.



Comprehensive System Support

Fully compatible with Windows 11/10/8.1/8/7, Windows Servers 2022/2019/2016/2012 R2, and Linux to meet your diverse operating system needs.

Specifications

Hardware Features

- Standards: IEEE 802.3, IEEE 802.3u, IEEE 802.3ab, IEEE 802.3bz, IEEE802.3an, IEEE802.3az, IEEE 802.3x
- Network Media: 2.5GBASE-T/1000BASE-T/100BASE-TX
- Data Rates:
 - 100 Mbps, 1 Gbps, 2.5 Gbps for Half-Duplex mode,
 - 200 Mbps, 2 Gbps for Full-Duplex mode
- Flow Control: 802.3x
- Interface: 1× PCI Express 2.1 x4, 1× RJ45 Gigabit/Megabit Port
- LEDs: 2.5 / 1 Gbps and 100 Mbps Link/Act
- Dimensions: 120.8 × 98.2 × 21.5 mm (4.8 × 3.9 × 0.8 in)

Others

- Package Contents
 - 2.5 Gigabit PCIe Network Adapter (TX201)
 - Standard/Low-Profile Brackets
 - Quick Installation Guide
 - Resource CD
- Certification
 - FCC, CE, RoHS
- System Requirements
 - Win11/10/8.1/8/7, Win Server
 - 2022/2019/2016/2012R2/2012/2008 R2, Linux
- Environment
 - Operating Temperature: 0°C~40°C (32°F ~104°F)
 - Operating Humidity: 10%~90% non-condensing
 - Storage Humidity: 5%~90% non-condensing



For more information, please visit

https://www.tp-link.com/products/details/?model=TX201_V1

or scan the QR code left

Attention: This device may only be used indoors in all EU member states and EFTA countries.

Specifications are subject to change without notice. TP-Link is a registered trademark of TP-Link Technologies Co., Ltd. Other brands and product names are trademarks or registered trademarks of their respective holders. ©2022 TP-Link

*Maximum wired data throughput rates are the physical rates derived from IEEE Standard 802.3 specifications. Actual wired data throughput is not guaranteed and will vary as a result of environmental factors, Ethernet cable class, and computer performance.

*To ensure compatibility, you may need to update the adapter's drivers after an OS update. You can check the full list of OS support in the download center at [tp-link.com/download-center](https://www.tp-link.com/download-center).