

# Faceplates & Accessories

## Standard Faceplates & Back Boxes

Connectix Standard Faceplates are available in compact depth, single and dual gang versions, and have been designed to fit all industry standard modules. All Connectix faceplates are supplied with fixing screws and come finished as standard in an attractive high gloss white.

Connectix Back Boxes are available in single and dual gang with a choice of surface mounted and flush mounted dry lined wall versions. Surface mount boxes feature knock outs for mini trunking adaptors. Dry lining wall boxes are suitable for mounting into 6-14 mm thick board and can easily cope with irregular shaped aperture sizes. Swivelling snap out clamps will grip any standard thickness of building board tightly.

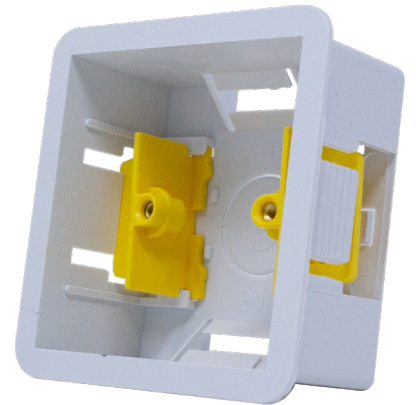
### Features and Benefits

#### Faceplates

- Compact depth
- Single or dual gang option
- Industry standard size

#### Back Boxes

- Tough shatter resistant material
- Designed for ease of use
- Uncluttered internal design



### Ordering Information

Product Description	Part Number
Compact Single Gang Euro Faceplate	008-010-010-25
Compact Dual Gang Euro Faceplate	008-010-010-70
½ Euro Blank White	008-001-004-70
Dry Lining Single Gang	012-006-001-001
Dry Lining Double Gang	012-006-002-001
32 mm White Single Gang	008-010-001-00
32 mm White Dual Gang	008-010-002-00
44 mm Single Gang Backbox	008-001-007-05
44 mm Dual Gang Backbox	008-001-007-10

### Product Specifications

Faceplate				
Dimensions	Single		Dual	
Width (mm)	87		148	
Height (mm)	87		87	
External Depth (mm)	9		9	
Faceplate	Compact Single Gang Euro Faceplate	Compact Dual Gang Euro Faceplate	Single Gang Euro Faceplate DDA Grey	Single Gang Euro Faceplate DDA Grey
Back Box				
Dimensions	Single	Dual	Dry Line	
			Std	Dual
Width (mm)	87	148	87	148
Height (mm)	87	87	87	87
External Depth (mm)	32	32	34	
Internal Depth (mm)	29.5	29.5	32	
Back Box	Dry Lining Single Gang	Dry Lining Double Gang	32mm White Single Gang	32mm White Dual Gang