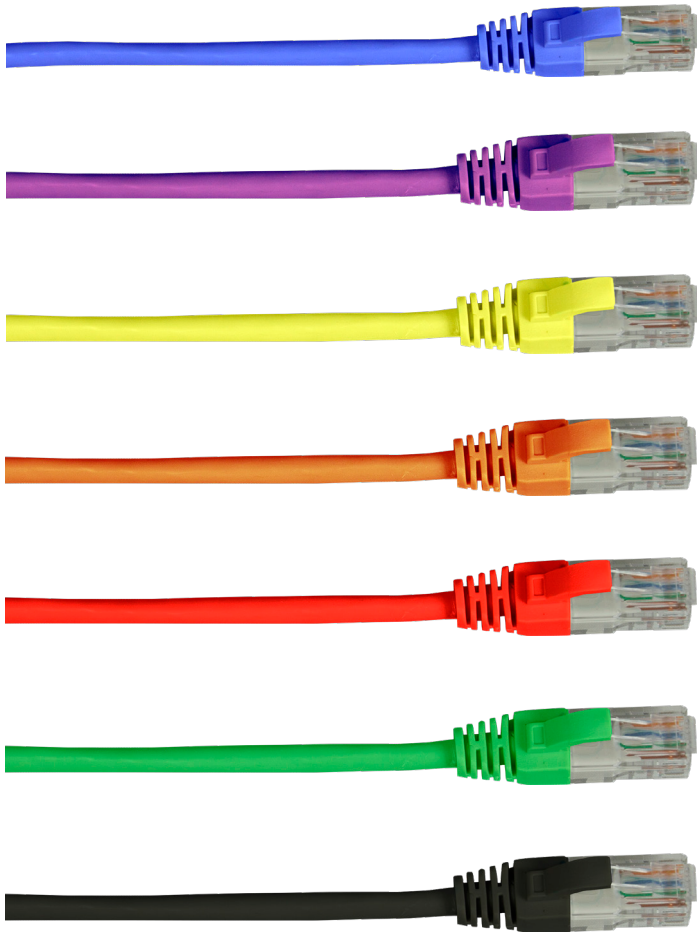


Copper Cabling Solutions

Category 5e UTP Patch Leads

Connectix Cat 5e RJ45 UTP Patch Leads are designed to exceed performance requirements. Magic Patch leads are made from Cat 5e stranded cable and are terminated using high performance modular plugs. Each lead is individually factory tested to the standard to ensure true standard compatibility. We stock a variety of booted and unbooted leads in lengths from 0.5 to 5 metres, available in several different colours.



Features & Benefits

- Fully conforms to ANSI/TIA-568-C
- Available from stock in lengths from 0.5 to 10 metres
- Available in nine colours
- Each lead is individually QA tested
- Plugs conform to ISO8877
- Connectix 25 Year System and Product Warranty

Product Specifications

Plug	High performance modular plug
Cable	LSZH Enhanced Category 5 standard cable
PVC Available	Yes
Cable Diameter	5mm
Conforms to	ANSI/TIA-568-C Category 5e Specification

Ordering Information

Product Description	Part Number
Cat 5e RJ45 0.5m Patch Lead	003-3NB4-005-***
Cat 5e RJ45 1m Patch Lead	003-3NB4-010-***
Cat 5e RJ45 2m Patch Lead	003-3NB4-020-***
Cat 5e RJ45 3m Patch Lead	003-3NB4-030-***
Cat 5e RJ45 4m Patch Lead	003-3NB4-040-***
Cat 5e RJ45 5m Patch Lead	003-3NB4-050-***
Cat 5e RJ45 10m Patch Lead	003-3NB4-100-***

Cable Colour Code ***

Grey	01C	Yellow	06C
White	02C	Orange	07C
Blue	03C	Purple	08C
Green	04C	Black	09C
Red	05C		