

# Mini Smart Wi-Fi Socket, Energy Monitoring

Model: Tapo P110

Live Smarter



Energy Monitoring



Schedule & Timer



Voice Control<sup>^</sup>



Remote Control



Away Mode



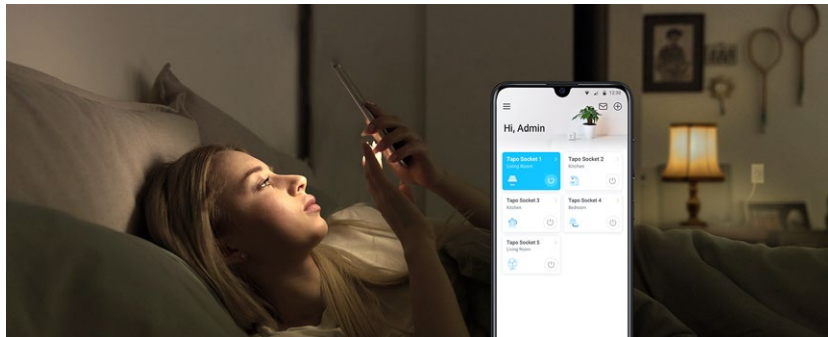
Flame-Retardant\*



## // Highlights

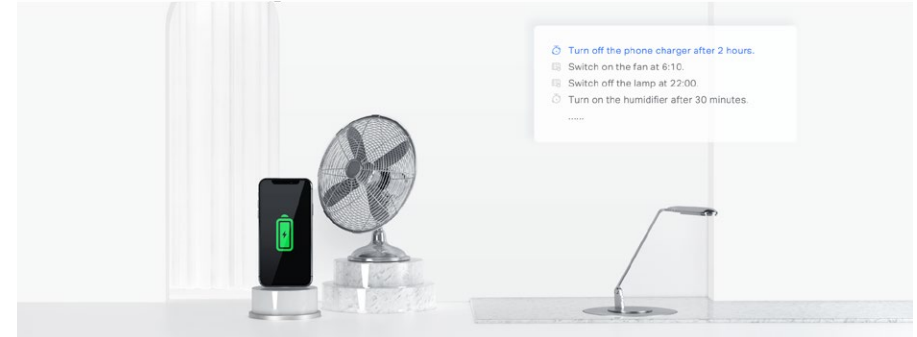
### Energy Monitoring

Manage your connected devices' real-time energy consumption and know which one is most power-hungry. Reduce unnecessary energy loss and lower your electric bills with the Schedule and Timer.



### Live Smarter by Presetting Time

Schedule and Timer features allow you to create weekly schedule and countdown plans. All of your connected electronics will automatically work at your preset time, making your life smart, convenient, and energy-saving.



## // Highlights

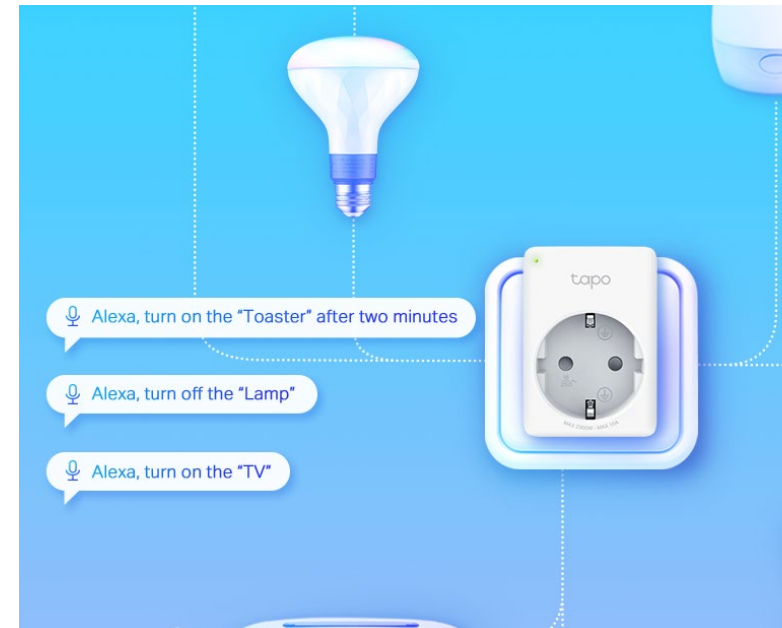
### Remote Control from Anywhere

Instantly turn connected devices on/off wherever you are via the Tapo app.  
Designed to facilitate your life and help eliminate potential safety hazards.



### Free Up Your Hands with Voice Control

You can use Amazon Alexa or Google Assistant to control your devices with voice commands like "Alexa, turn on the toaster please".



\*No separate hub and accessories are required.

## // Features

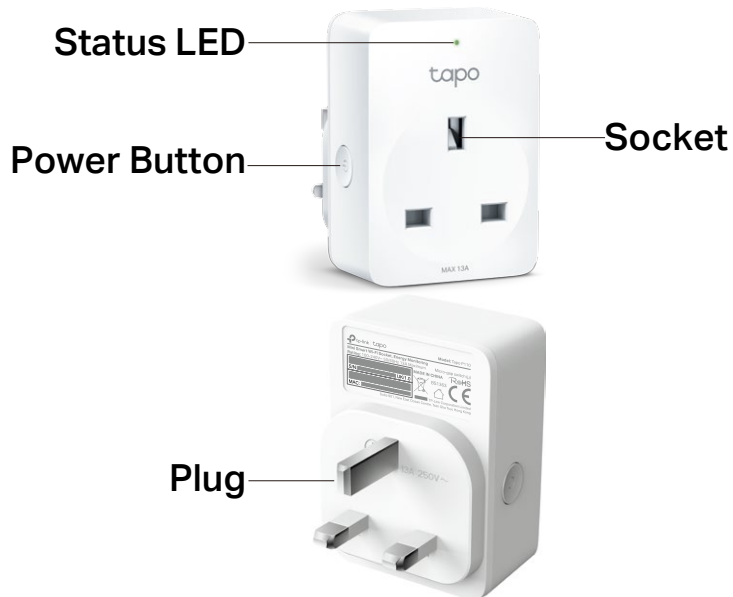
- **Energy Monitoring** – Analyze the connected device's real-time and historical power usage.
- **Remote Control** – Instantly turn connected devices on/off wherever you are through the Tapo app.
- **Schedule** – Preset a schedule to automatically manage devices.
- **Timer** - Create a countdown timer for connected electronics.
- **Voice Control** – Manage your smart socket with voice commands via Amazon Alexa or the Google Assistant.
- **Away Mode** – Automatically turns devices on and off at different times to give the appearance that someone is home.
- **Compact Design** - Mini-sized to avoid blocking adjacent sockets.
- **Easy Setup and Use** - No hub required, set up quickly and manage easily through the free app.
- **Device Sharing** - Easily share management permissions with each member of your family.
- **Flame-Retardant\*** - PC flame-retardant materials help minimize burning hazards.

\*Made with V-0 (UL94) flame-retardant materials.

## // Specifications

### General

- LED&Button: Status LED, Power Button
- Material: V-0(UL-94 ) Flame retardant PC
- Voltage: AC, 100-240 V, 50/60 Hz
- Max Load: 2990 W, 13 A<sup>#</sup>
- Protocols: IEEE 802.11b/g/n, 2.4 GHz Wi-Fi



### Wireless

- Wireless Standards: IEEE 802.11b, 802.11g, 802.11n
- Frequency: 2.400-2.4835 GHz
- Signal Rate: 72Mbps at 2.4 GHz
- Transmit Power: <20dBm (EIRP)
- Wireless Function: Wireless Client
- Wireless Security: No Security; WEP; WPA-PSK; WPA2-PSK; WPA3

### Others

- Package Contents:  
Mini Smart Wi-Fi Socket Tapo P110  
Quick Start Guide
- Certifications: CE, RoHS
- Operating Temperature: 0 °C–40 °C
- Operating Humidity: 10%–90%RH, Non-condensing
- Dimensions: 2.9 \* 2.0 \* 1.2 in (72.5 \* 51.5 \* 30.6 mm)

<sup>^</sup>Voice control is only supported with certain voice assistants.

<sup>\*</sup>Made with V-0(UL94) flame-retardant material.

<sup>#</sup>The total power of the connected electrical equipment should not exceed the max load current, and maximum power supported varies based on the appliance. Please do not use in damp environments or outdoors. For more information, please visit <https://www.tapo.com/>

Specifications are subject to change without notice. All brands and product names are trademarks or registered trademarks of their respective holders.

©2021 TP-Link