



PTZ NETWORK CAMERAS

- PTZ SPEED DOME
- PTZ
- PTZ MICRO DOME



CANON QUALITY: COLOR AND CLARITY THAT OPENS NEW POSSIBILITIES

Canon Network Cameras bring no-compromise quality to all kinds of industries and applications, from law enforcement and city surveillance to commercial business, government, education and more. Incorporating over 70 years of Canon's optical and image processing expertise, users can depend on outstanding image quality and exceptional low-light performance to capture virtually every detail. Canon's strong commitment to technological innovation also delivers advanced, intelligent features that can be used to help build the most advanced security and surveillance systems.



PTZ SPEED DOME

LOW-LIGHT



PAN/TILT MICRO DOME



PTZ MICRO DOME



PTZ

IDEAL FOR LOW-LIGHT APPLICATIONS

Canon Network Cameras feature enhanced low-light performance and color reproduction for optimal recognition in a variety of applications. The balance of resolution and usable color in low-light situations makes them ideal for city surveillance, perimeter protection and parking lots, and more.



CANON PTZ NETWORK CAMERAS

The line-up of Canon Network Cameras includes a wide range of PTZ models for indoor and outdoor surveillance, even in harsh, challenging, low-light environments. Choose from 360° Speed Domes, flexible PTZ models that offer a wide range of enclosure options and extra compact Micro Domes.

PTZ SPEED DOME



VB-R12VE 2.1 MEGA PIXELS

- DiGiC DV III
- AC DC PoE PoE+
- All Weather Model
- 360-degree Revolving
- 180-degree Tilt
- Optical 30x Zoom
- Enhanced Digital Zoom
- Impact Resistance
- Image Stabilization
- ADSR

This model is also available with audio and I/O support as the VB-R13VE.



VB-R10VE 1.3 MEGA PIXELS

- DiGiC DV III
- AC DC PoE PoE+
- All Weather Model
- 360-degree Revolving
- 180-degree Tilt
- Optical 30x Zoom
- Enhanced Digital Zoom
- Impact Resistance
- Image Stabilization
- ADSR

This model is also available with audio and I/O support as the VB-R11VE.



VB-R13 2.1 MEGA PIXELS

- DiGiC DV III
- AC DC PoE
- 360-degree Revolving
- 180-degree Tilt
- Optical 30x Zoom
- Enhanced Digital Zoom
- Image Stabilization
- ADSR
- SD Card
- CCMT



VB-R11 1.3 MEGA PIXELS

- DiGiC DV III
- AC DC PoE
- 360-degree Revolving
- 180-degree Tilt
- Optical 30x Zoom
- Enhanced Digital Zoom
- Image Stabilization
- ADSR
- SD Card
- CCMT

PTZ



VB-H43 2.1 MEGA PIXELS

- DiGiC DV III
- AC DC PoE
- 340-degree Pan
- 100-degree Tilt
- Optical 20x Zoom
- Low Light Visibility
- Image Stabilization
- Custom Settings
- SD Card
- Auto Day/Night



VB-M42 1.3 MEGA PIXELS

- DiGiC DV III
- AC DC PoE
- 348-degree Pan
- 105-degree Tilt
- Optical 5x Zoom
- Low Light Visibility
- Clear IR Mode
- Enhanced Digital Zoom
- Image Stabilization
- Custom Settings

VB-M50B 1.3 MEGA PIXELS

PTZ MICRO DOME

VB-S30VE 2.1 MEGA PIXELS

- DiGiC DV III
- PoE
- 350-degree Pan
- 90-degree Tilt
- Optical 3.5x Zoom
- Compact
- Custom Settings
- Image Stabilization
- ADSR
- microSD

VB-S30D 2.1 MEGA PIXELS

- DiGiC DV III
- PoE
- 350-degree Pan
- 90-degree Tilt
- Optical 3.5x Zoom
- Compact
- Viewer PTZ
- Image Stabilization
- ADSR
- microSD

PAN/TILT MICRO DOME

VB-S31D 2.1 MEGA PIXELS

- DiGiC DV III
- PoE
- 350-degree Pan
- 90-degree Tilt
- Compact
- Low Light Visibility
- Image Stabilization
- ADSR
- microSD
- AUTO SSC

RECOMMENDED MOUNTING CONFIGURATIONS & OTHER ACCESSORIES

Type	PTZ SPEED DOME				PTZ			PTZ MICRO DOME		PAN/TILT MICRO DOME	
	VB-R12VE	VB-R10VE	VB-R13	VB-R11	VB-H43	VB-M42	VB-M50B		VB-S30VE	VB-S30D	VB-S31D
Wall Mount	OUTDOOR WM10-VB Item #0720C001	OUTDOOR A-SWDSZWB600 Item #2178V433	OUTDOOR A-ODWSCS Item #3067V200	OUTDOOR A-SWDSZWB Item #1968V994 A-SWDSVC Item #1381V118	OUTDOOR A-SWDSZWB Item #1968V994 A-SWDSVC Item #1381V118	OUTDOOR A-SWDSWB3 Item #2787V308	OUTDOOR A-ODWSCS Item #3067V200 A-SWDSVC Item #1381V118	OUTDOOR A-SWDSWB3 Item #2787V308	-	-	A-SWDSWB3 Item #2787V308
Ceiling Mount	OUTDOOR CM10-VB Item #0711C001	Mounting Plate (Included with camera)	OUTDOOR A-SWDSVC Item #1381V118	OUTDOOR SS40-B-VB Item #4962B002	OUTDOOR A-SWDSVC Item #1381V118	OUTDOOR A-SWDSVC Item #1381V118	OUTDOOR A-SWDSVC Item #1381V118	Direct attach to ceiling	Direct attach to ceiling	-	-
Pendant Mount	OUTDOOR PA10-15-VB Item #07180C001	PC640-VB Item #0719C001	OUTDOOR PC600-VB Item #9918B001	OUTDOOR SS40-B-VB Item #4962B002	-	-	-	PC30VE-VB Item #1736C001	PC30-VB Item #9919B001	-	-
Pole Mount	OUTDOOR WM10-VB Item #0720C001	OUTDOOR A-BK35 Item #1381V106	OUTDOOR A-SWDSZWB600 Item #2178V433	OUTDOOR A-SWDSZWB Item #1968V994 A-SWDSVC Item #1381V118	OUTDOOR A-SWDSZWB Item #1968V994 A-SWDSVC Item #1381V118	OUTDOOR A-BK35 Item #1381V106 A-ODWSCS Item #3067V200	OUTDOOR A-BK35 Item #1381V106 A-SWDSVC Item #1381V118	-	-	-	-
Corner Mount	OUTDOOR WM10-VB Item #0720C001	OUTDOOR A-CM3 Item #1381V107	OUTDOOR A-SWDSZWB600 Item #2178V433	OUTDOOR A-SWDSZWB Item #1968V994 A-SWDSVC Item #1381V118	OUTDOOR A-SWDSZWB Item #1968V994 A-SWDSVC Item #1381V118	OUTDOOR A-CM3 Item #1381V107 A-ODWSCS Item #3067V200	OUTDOOR A-CM3 Item #1381V107 A-SWDSVC Item #1381V118	-	-	-	-
Recess Mount	-	SR11-S-VB Item #0714C001	DR41-C-VB Item #6816B001	METAL ENCLOSED MOUNT A-ID5C5 Item #3067V211	-	-	-	-	-	ITS-S-RK Item #2943V528	-
Other Accessories	DUI0-S-VB Tinted Capsule Item #0721C001	DUI0-S-VB Tinted Capsule Item #0721C001	Junction Box Mount (Included with camera)	-	-	-	-	CB30VE-VB Conduit Box Adapter Item #1735C001	-	-	-

ADVANCED CANON TECHNOLOGIES

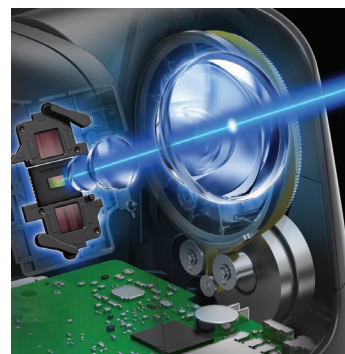
Genuine Canon Optics, a high-sensitivity CMOS sensor and DIGIC DV III Image Processor technology help deliver high-resolution image quality, accurate color reproduction and remarkable low-light performance. Combined with impressive optical zoom, comprehensive presets and flexible PTZ control, they can provide a key component in creating an advanced security and surveillance solution.



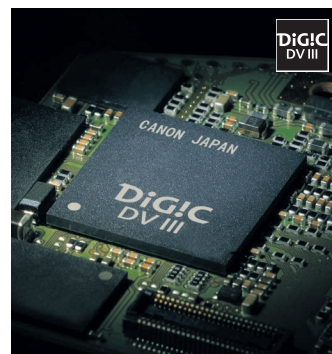
Outstanding Image Clarity and Color Accuracy – Even in Challenging Low-light Environments

All Canon Network Cameras share several core optical and image processing technologies which combine to help provide images with remarkable color accuracy, even in low-light environments:

- Genuine Canon Lens
- High-sensitivity CMOS sensor
- Canon's powerful DIGIC DV III Image Processor



Genuine Canon Lens and High-sensitivity Sensor (image shown of VB-M50B)



DIGIC DV III Image Processor

The lenses used in Canon Network Cameras share a similar design process as Canon's world famous EF lenses. In addition, Canon uses its expertise to create lenses that have many desirable qualities.

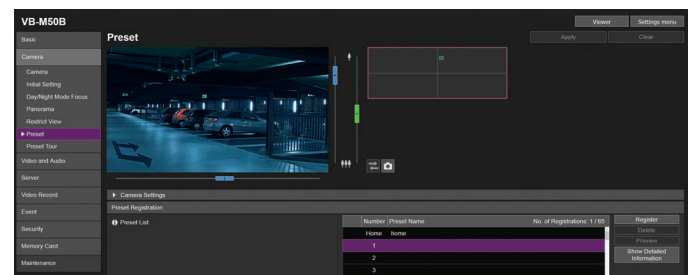
- High Refractive Index Glass for compact design and reduced weight
- High-Index Ultra Low Dispersion Lens elements for a clean image free of artifacts
- Aspherical Lens Design for capturing the image cleanly without bends or distortion
- IR Corrected Lens elements to protect image sharpness
- Anti-Reflective Coatings to reduce ghosting and flaring

Optical/Digital/Enhanced Digital Zoom

- **Optical Zoom** provides magnification for long-distance viewing, enabling cleaner, sharper video for easier identification of subjects of interest.
- **Digital Zoom** can be applied which increases the size of the pixels to make the subject appear larger.
- Select models have **Enhanced Digital Zoom**, an alternative to digital zoom, that virtually creates the same effect at a lower resolution. Users can stream a digital crop of the original video stream for significant bandwidth and storage savings while delivering the same quality as what they would get with digital zoom.

Preset Positions and Tour Routes

Allow automation of camera movement to different areas of interest at different times of the day in order to save time and cover more important areas with a single camera. Canon Network Cameras internally save the desired Pan/Tilt/Zoom position of the camera making it easy to return without having to manually adjust each time. Presets may also include image settings such as Focus Mode, Exposure, Slow Shutter, White Balance, Day/Night and other settings that allow greater flexibility in adapting to varying light conditions.



Preset setting screen for VB-M50B

Image Stabilization

Motion blur caused by wind or mechanical vibration can be digitally reduced using image stabilization. The camera calculates the amount of horizontal and vertical vibration and stabilizes the image by digitally removing pixels, which helps result in capturing video with minimized motion blurring.

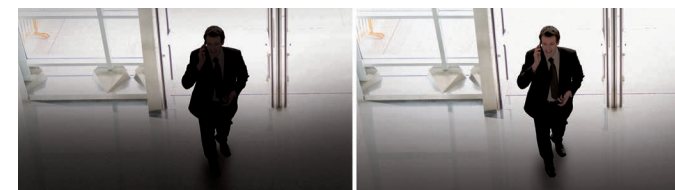
Custom Exposure Settings

Image optimization features, including Haze Compensation, Smart Shade Control, Auto Gain Control Limit and White Balance Adjustment can be used to help maximize video image quality. Camera presets can save exposure and image settings and can be recalled later through timers or auto day/night mode.

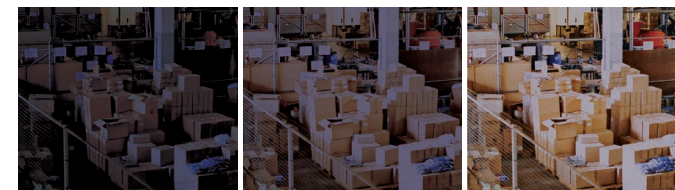
Haze Compensation automatically heightens contrast to help display clear images despite the presence of haze, fog or smog.



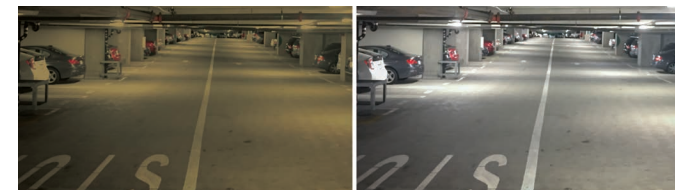
Smart Shade Control analyzes and selectively adjusts the exposure in overexposed and darkened areas to help display clarity throughout entire view.



Auto Gain Control Limit gives the user full control over the amount of digital gain applied when using auto exposure in low-light scenarios.



White Balance settings can be adjusted in order to compensate for different types of lighting to help ensure color-accurate images.



Simultaneous Streaming of M-JPEG and H.264

All Canon Network Cameras can simultaneously stream multiple resolutions of high-quality M-JPEG and H.264. This provides outstanding flexibility and cost savings as end users can monitor using a higher resolution, while recorded video is set at a lower resolution and frame rate to save storage space and bandwidth.

SD Card Recording

Live images and H.264 video can be saved to a memory card (SD, SDHC and SDXC support) – this secondary storage is particularly important during network outages to ensure that no critical video data is lost. The Recorded Video Utility allows for searching, downloading and viewing the recorded video, while the Canon Camera Management Tool (CCMT) allows backing up and restoring camera settings.

* Select Models use MicroSD Cards.

On-board Video Analytics

Intelligent functions are built into Canon Network Cameras to aid in analyzing video content for purposes of alerting and identifying potentially critical situations and events. For maximum flexibility, detection characteristics (sensitivity, area and duration) can be finely tuned to allow for precise event detection, while advanced notification tools can quickly provide alerts to help expedite response time.

Moving Object Detection – used to detect moving objects, such as persons or vehicles, in predefined sensitive or restricted areas such as warehouses and unoccupied offices.



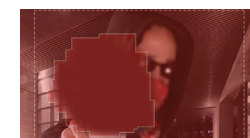
Abandoned Object Detection – used to identify motionless objects that have been left behind by a moving object such as a suspicious package placed on a crowded city street or train platform.



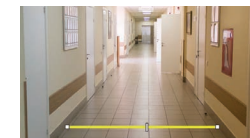
Removed Object Detection – used to identify the removal of a static object from a designated area, such as a priceless painting in a museum/gallery.



Camera Tampering Detection – used to detect the tampering of a camera such as redirection, blocking, defocusing or even spray paint.



Passing Detection – used to detect when a moving object passes through the camera's field of view from a specified direction, such as an individual entering into a restricted area from an unauthorized direction.

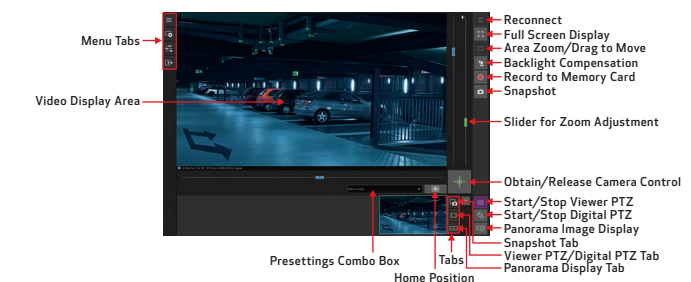


Privacy Mask

Privacy mask can be used to block multiple areas in the camera's field of view to prevent viewing of sensitive material. This feature allows cameras to be placed in areas where there are restrictions on what can be recorded, such as overlooking ATM machines.

Web-based Camera Viewer

Camera Viewer with mobile device support allows access of camera functions from virtually any location via the web browser on a PC or mobile device. The "Mobile Viewer" interface provides easy touch-screen use and quick configuration for remote control of the camera.



Security

IEEE802.1X ensures only authorized devices are connected to the network, allowing installation in high-security areas. IPSEC encrypts all IP data packets sent, while SSL/ITS encrypts sensitive information sent between a client and an application. These help ensure video data is secure and hasn't been intercepted or altered.

NETWORK CAMERAS COMPARISON CHART

		PTZ SPEED DOME				PTZ		PTZ MICRO DOME		PAN/TILT MICRO DOME	
Products											
		VB-R12VE	VB-R10VE	VB-R13	VB-R11	VB-H43	VB-M42	VB-M50B	VB-S30VE	VB-S30D	VB-S31D
Image Sensor		1/3" progressive scan CMOS	1/3" progressive scan CMOS	1/3" progressive scan CMOS	1/3" progressive scan CMOS	1/3" progressive scan CMOS		1/4.85" progressive scan CMOS	1/4.85" progressive scan CMOS	1/3" progressive scan CMOS	
Lens	Zoom	30x optical zoom, 20x digital zoom Enhanced digital zoom Auto focus	30x optical zoom, 20x digital zoom Auto focus	30x optical zoom, 20x digital zoom Enhanced digital zoom Auto focus	30x optical zoom, 20x digital zoom Auto focus	20x optical zoom, 12x digital zoom Auto focus		5x optical zoom, 20x digital zoom Enhanced digital zoom Auto focus	3.5x optical zoom, 4x digital zoom Auto focus	3.5x optical zoom, 4x digital zoom Auto focus	4x digital zoom
	Focal Length	4.4mm - 132mm	4.4mm - 132mm	4.4mm - 132mm	4.4mm - 132mm	4.7mm - 94mm		17.7mm - 88.5mm	2.25mm - 7.88mm	2.25mm - 7.88mm	2.7mm
	F-Number	F1.4 - F4.6	F1.4 - F4.6	F1.4 - F4.6	F1.4 - F4.6	F1.6 - F3.5		F1.8 - F2.4	F1.4 - F2.6	F1.4 - F2.6	F1.6
Horizontal Angle of View (16:9)		62.6° - 2.2°	58.4° - 2.1°	62.6° - 2.2°	58.4° - 2.1°	60.4° - 3.2°		15.6° - 3.2°	77.1° - 20.6°	77.7° - 20.7°	95°
Day and Night		Automatic	Automatic	Automatic	Automatic	Automatic		Automatic	Automatic (Digital Night Mode)	Automatic (Digital Night Mode)	Automatic (Digital Night Mode)
Min. Illumination / Light Sensitivity (lux)*		0.05 (color) 0.002 (B/W)	0.03 (color) 0.002 (B/W)	0.05 (color) 0.002 (B/W)	0.03 (color) 0.002 (B/W)	0.4 (color) 0.02 (B/W)		0.04 (color) 0.002 (B/W)	1.0 (color) 0.55 (B/W)	0.95 (color) 0.5 (B/W)	0.45 (color) 0.25 (B/W)
Video Compression		Motion JPEG, H.264	Motion JPEG, H.264	Motion JPEG, H.264	Motion JPEG, H.264	Motion JPEG, H.264		Motion JPEG, H.264	Motion JPEG, H.264	Motion JPEG, H.264	Motion JPEG, H.264
Max. Video Resolution (pixels)		1920 x 1080	1280 x 960	1920 x 1080	1280 x 960	1920 x 1080	1280 x 960	1280 x 960	1920 x 1080	1920 x 1080	1920 x 1080
Maximum Frame Rate		30	30	30	30	30		30	30	30	30
Pan/Tilt		256 presets, 360° continuous panning, 180° tilt range, 450°/sec. pan/tilt speed, guard tour	256 presets, 360° continuous panning, 180° tilt range, 450°/sec. pan/tilt speed, guard tour	256 presets, 360° continuous panning, 180° tilt range, 450°/sec. pan/tilt speed, guard tour	256 presets, 360° continuous panning, 180° tilt range, 450°/sec. pan/tilt speed, guard tour	64 presets, 340° pan range, 100° tilt range, 150°/sec. pan/tilt speed, guard tour		64 presets, 348° pan range, 105° tilt range, 300°/sec. pan/tilt speed, guard tour	64 presets, 350° pan range, 90° tilt range, 120°/sec. pan/tilt speed	64 presets, 350° pan range, 90° tilt range, 120°/sec. pan/tilt speed	64 presets, 350° pan range, 90° tilt range, 120°/sec. pan/tilt speed
Audio Support		N/A	N/A	Two-way	Two-way	Two-way		Two-way	Two-way using built-in mic	One-way	One-way
Alarm In-/Outputs		N/A	N/A	2 configurable inputs/outputs	2 configurable inputs/outputs	2 configurable inputs/outputs		2 configurable inputs/outputs	1 configurable input/output	1 configurable input/output	1 configurable input/output
Intelligent Video		Motion, Abandoned, Removed, Tampering, Passing and Intrusion Detection Auto Tracking	Motion, Abandoned, Removed, Tampering, Passing and Intrusion Detection Auto Tracking	Motion, Abandoned, Removed, Tampering, Passing and Intrusion Detection Auto Tracking	Motion, Abandoned, Removed, Tampering, Passing and Intrusion Detection Auto Tracking	Motion, Abandoned, Removed, Tampering and Passing Detection		Motion, Abandoned, Removed, Tampering, Passing and Intrusion Detection	Motion, Abandoned, Removed, Tampering and Intrusion Detection	Motion, Abandoned, Removed, Tampering and Passing Detection	Motion, Abandoned, Removed, Tampering and Passing Detection
Security		Multi-level passwords, IP filtering HTTPS encryption IPSec IEEE802.1X	Multi-level passwords, IP filtering HTTPS encryption IPSec IEEE802.1X	Multi-level passwords, IP filtering HTTPS encryption IPSec IEEE802.1X	Multi-level passwords, IP filtering HTTPS encryption IPSec IEEE802.1X	Multi-level passwords, IP filtering HTTPS encryption IPSec IEEE802.1X		Multi-level passwords, IP filtering HTTPS encryption IPSec IEEE802.1X	Multi-level passwords, IP filtering HTTPS encryption IPSec IEEE802.1X	Multi-level passwords, IP filtering HTTPS encryption IPSec IEEE802.1X	Multi-level passwords, IP filtering HTTPS encryption IPSec IEEE802.1X
Power		AC/DC PoE IEEE802.3af Class 0 PoE+ IEEE802.3at	AC/DC PoE IEEE802.3af Class 0 PoE+ IEEE802.3at	AC/DC PoE IEEE802.3af Class 0	AC/DC PoE IEEE802.3af Class 0	AC/DC PoE IEEE802.3af Class 0		AC/DC PoE IEEE802.3af Class 0	PoE IEEE802.3af Class 0	PoE IEEE802.3af Class 0	PoE IEEE802.3af Class 0
Outdoor Use		Outdoor-ready -58°F (-50°C) - 131°F (55°C)	Outdoor-ready -58°F (-50°C) - 131°F (55°C)	N/A	N/A	N/A		N/A	Outdoor-ready -13°F (-25°C) - 122°F (50°C)	N/A	N/A
Other		IP66, IK10, vandal-resistant, NEMA 4X rating, memory card slot, mobile viewer, digital image stabilization, cold startup, ONVIF	IP66, IK10, vandal-resistant, NEMA 4X rating, memory card slot, digital image stabilization, cold startup, ONVIF	Memory card slot, mobile viewer, digital image stabilization, mounting plate, ONVIF	Memory card slot, digital image stabilization, mounting plate, ONVIF	Memory card slot, mobile viewer, digital image stabilization, ONVIF		Clear IR, memory card slot, mobile viewer, digital image stabilization, ONVIF	For ceiling-mount installation only, IP66, IK10, vandal resistant, compact size, moisture release, memory card slot, mobile viewer, ONVIF	For ceiling-mount installation only, compact size, memory card slot, ONVIF	For ceiling-mount installation only, compact size, memory card slot, ONVIF
Part #		1382C001	0307C001	1383C001	0306C001	9902B002	9906B002	1064C001	1387C001	8818B001	8819B001
MSRP		\$4,829	\$4,499	\$4,024	\$3,999	\$2,899	\$1,979	\$3,499	\$736	\$999	\$899
Special Order Models		This model is also available with audio and I/O support as the VB-R13VE.	This model is also available with audio and I/O support as the VB-R11VE.	N/A	N/A	N/A		N/A	N/A	N/A	N/A

* Widest aperture, shutter speed 1/30 sec.



1-800-OK-CANON
PRO.USA.CANON.COM/SUPPORT

FOCUSED ON PROFESSIONALS

Whether you are a business of one, an organization of many or somewhere in between, working professionals need service and support they can count on. Canon provides skilled technicians to support our entire line of Network Cameras. This group of dedicated professionals has years of experience assisting customers with their network video solutions needs. From the simplest of setups, to the most complex configurations, we are here to answer your questions.

CUSTOMER SERVICE & TECHNICAL SUPPORT

- Dedicated Team of Industry Experts
- Industry-leading Response Times
- 100% U.S.-based Call Center



PRODUCT REPAIR & MAINTENANCE

- State-of-the-Art Service Facilities
- Fast Repair Processing & Available Loaner Equipment
- Genuine Canon Parts
- Factory-level Quality



CANON VISUAL COMMUNICATION PRODUCT LIMITED WARRANTY

Canon Network Cameras offer peace of mind as they are backed by the Canon Visual Communication Product Limited Warranty, which guarantees that the Network Camera will be free from defects in workmanship and materials during the applicable coverage period. Fixed Network Camera models are covered for three (3) years from the date of original purchase; and Pan/Tilt/Zoom (PTZ) and Pan/Tilt (PT) Network Camera models are covered for one (1) year from the date of original purchase. For complete terms and conditions please visit the Canon Network Camera microsite.

ADVANCED WARRANTY EXCHANGE SERVICE PROGRAM

The Advanced Warranty Exchange Service Program* provides you with enhanced warranty service in addition to traditional "mail-in" repair service. The exchange program provides a replacement unit in exchange for your eligible inoperative Canon Network Camera if repair service is required during the product's limited warranty period.

SERVICE LOANER PROGRAM

The Canon Service Loaner Program* provides a loaner product in the event that your eligible Canon Network Camera is in need of repair during the limited warranty period. The loaner Network Camera may be used while your inoperative unit is being serviced via Canon's "mail-in" repair service.

* Programs and service offerings subject to change without notice. For complete details, including terms and conditions for each program, or to learn more about Service and Support Offerings for Canon Network Cameras, please contact a Canon sales rep or call 1-800-OK-CANON

NETWORKCAMERA.USA.CANON.COM

Canon U.S.A., Inc. One Canon Park, Melville, NY 11747



© 2017 Canon U.S.A., Inc. All rights reserved. Not responsible for typographical errors. Some of the images and effects are simulated. Canon and DIGIC are registered trademarks of Canon Inc. in the United States and may also be trademarks in other countries. "ONVIF" and are trademarks of ONVIF Inc.