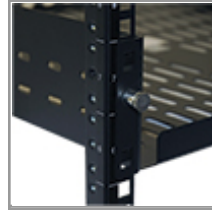


## SmartRack 2U Cantilever Toolless Mount Fixed Shelf (50 lb/22.7 kg capacity; 18 in./457 mm depth)

MODEL NUMBER: SRSHELF2PTM



### Highlights

- Fixed Shelf, 2U Cantilever Mount
- 4-post rack compatible
- 18-inch shelf depth
- Snap-in toolless mounting

### Package Includes

- SRSHELF2PTM Shelf

### Description

Tripp Lite's SRSHELF2PTM allows you to add a shelf to a 4-post rack to accommodate tower UPS systems, monitors or any other equipment that is not rackmounted. The unit supports 50 lb with an 18-in. depth. For peace of mind, the SRSHELF2PTM comes with a 5-year warranty.

### Features

- Ideal for adding extra flat surfaces or shelf space in 4-post rack enclosures
- Supports a load of up to 50 lb
- 18-inch shelf depth to accommodate a wide variety of equipment
- Snap-in toolless mounting
- Vented design increases airflow to sensitive equipment
- Heavy-duty, cold-rolled steel construction with black finish
- 5-year warranty

## Specifications

OVERVIEW	
Model Type	Shelves
Accessories Type	Shelf
PHYSICAL	
Shipping Dimensions (hwd / in.)	4 x 20 x 21
Shipping Dimensions (hwd / cm)	10.16 x 50.8 x 53.34
Shipping Weight (lbs.)	9



**Tripp Lite**  
1111 W. 35th Street  
Chicago, IL 60609 USA  
Telephone: 773.869.1234  
[www.tripplite.com](http://www.tripplite.com)

Shipping Weight (kg)	4.08
Unit Dimensions (hwd / in.)	3.5 x 19 x 18
Unit Dimensions (hwd / cm)	8.89 x 48.26 x 45.72
Unit Weight (lbs.)	5
Unit Weight (kg)	2.27
<b>WARRANTY</b>	
Product Warranty Period (Worldwide)	5-year limited warranty

© 2015 Tripp Lite. All rights reserved. All trademarks are the sole property of their respective owners. Tripp Lite has a policy of continuous improvement. Specifications are subject to change without notice. Photos may differ slightly from final products.