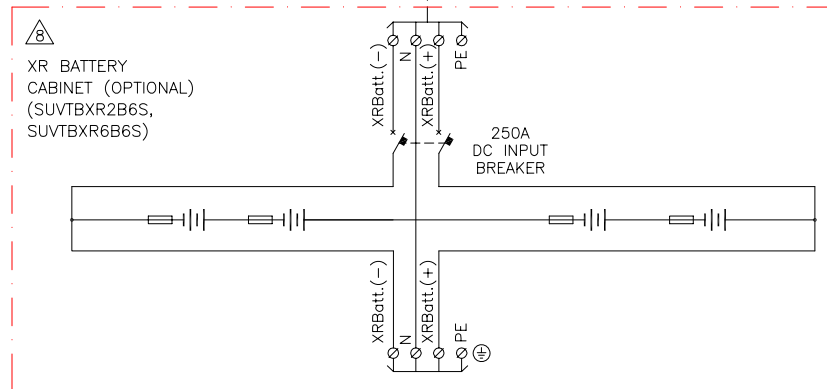
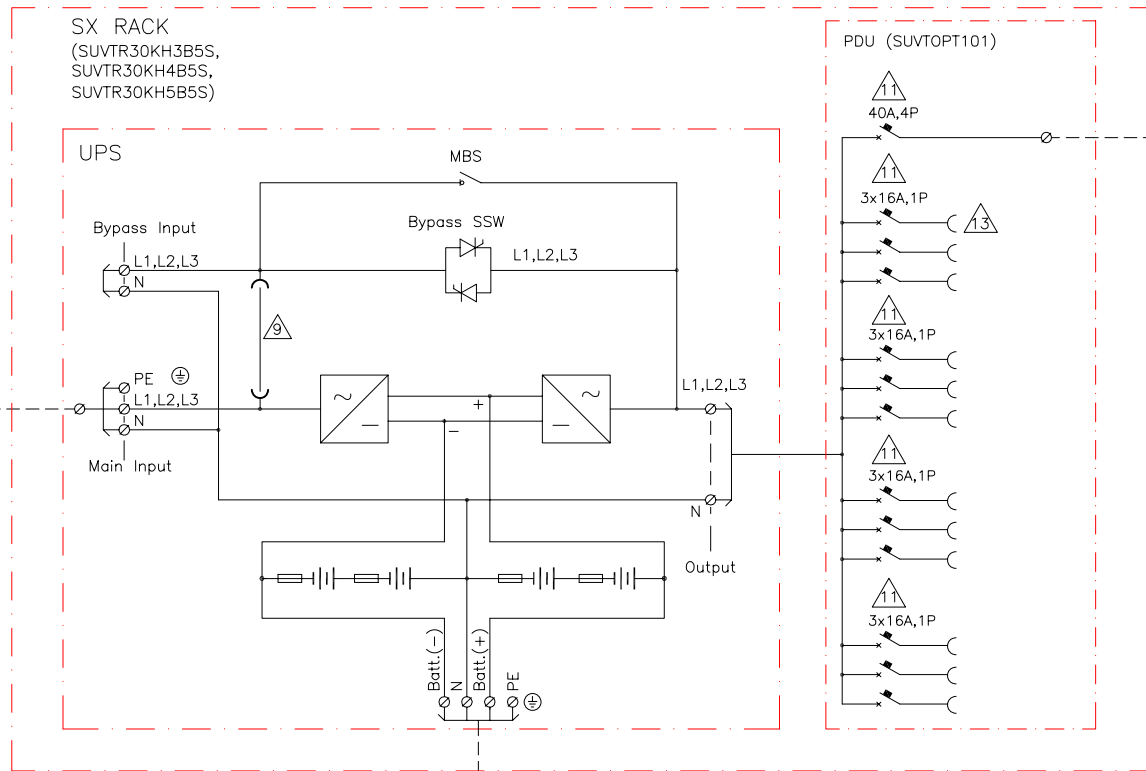
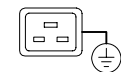


△2  
MAINS INPUT  
(PROVIDED BY OTHERS)  
3x400/230V  
L1,L2,L3,N,PE

50A  
(gL TYPE  
FUSE)



△13 TYPICAL SOCKET DETAIL



3xIEC309-C19  
Qty. - 12Nos.

NOTES:

1. PLEASE REFER TO APC INSTALLATION GUIDE.
- △2. MUST BE L1,L2,L3,N,PE SOURCE PROVIDED BY OTHERS.
- △3. ----- = AC/DC CABLING PROVIDED BY OTHERS.
4. ALL AC POWER CABLING IS L1,L2,L3,N,PE.
- △5. DC CABLING SHOULD BE SEGREGATED FROM AC CABLING SEE BATTERY INSTALLATION INFORMATION
6. UPS INPUT AND OUTPUT CABLES SHOULD BE SEGREGATED
7. POWER WIRING AND CONTROL WIRING SHOULD BE SEGREGATED
- △8. XR BATTERY CABINET CAN BE BAYED TO UPS. BAYING KIT HAS TO BE PURCHASED AS AN OPTION.  
XR BATTERY CABINET IS ALSO AVAILABLE WITHOUT BREAKER, WITH DC FUSES ONLY UP TO 4 XR BATTERY CABINETS CAN BE CONNECTED TO UPS TO EXTEND BACKUP TIME
- △9. SINGLE MAINS INSTALLATION IS A DEFAULT.  
FOR DUAL MAINS OPTION REFER TO DRAWING# SUVTR30KH2S-SD FOR DETAILS
10. OUTPUT OVERCURRENT PROTECTION MUST BE PROVIDED BY OTHERS.  
RECOMMENDED OUTPUT BREAKER RATING 50A
- △11. TRIPPING CHARACTERISTIC OF MCBs - TYPE 'c'
12. INSTALLATION MUST COMPLY WITH NATIONAL AND LOCAL ELECTRICAL REGULATIONS.

THIS DRAWING AND SPECIFICATIONS HEREIN ARE THE PROPERTY OF AMERICAN POWER CONVERSION AND SHALL NOT BE COPIED, REPRODUCED OR USED IN WHOLE OR IN PART, AS THE BASIS FOR THE MANUFACTURE OR SALE OF ITEMS WITHOUT WRITTEN PERMISSION FROM APC. THIS DRAWING IS BASED UPON LATEST AVAILABLE INFORMATION AND IS SUBJECT TO CHANGE WITHOUT NOTICE.

TITLE: SMART-UPS VT ISX  
INPUT: 3x400/230V SINGLE MAINS  
OUTPUT: 3x400/230V 30kVA  
SYSTEM ONE LINE DIAGRAM

DWG NO: SUVTR30KH1S-SD  
DRAWN: C KRISHNA 28/09/06  
CHECKED: B.H.NIELSEN 03/10/06  
ENGINEER: C.LARSEN 03/10/06

REV. -  
PROJECTION

**APC**  
AMERICAN POWER CONVERSION  
132 FARGROUNDS RD  
WEST KINGSTON, RI 02892