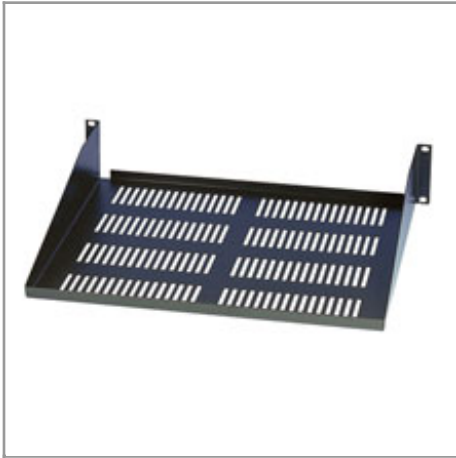


SmartRack 2U Cantilever Fixed Shelf (60 lb / 27 kg capacity; 18-in. / 457 mm depth.)

MODEL NUMBER: **SRSHELF2P**



Highlights

- Fixed Shelf, 2U Cantilever mount. Required mounting hardware included
- 2 or 4 post rack compatible
- 18 inch shelf depth
- Cantilever shelf supports monitors and other equipment
- Cold rolled steel with black finish.
- Use two shelves back to back to create a deep fixed shelf in 2POST racks

Package Includes

- Shelf and mounting hardware

Description

Tripp Lite's SmartRack SRSHELF2P is a 2U cantilever mount fixed shelf. Cantilever shelf supports monitors and other equipment with a 60lb capacity. Shelf is compatible with 2 or 4 post rack enclosure cabinets. The SRSHELF2P is 18 inches in depth but can use two shelves back to back to create a deep fixed shelf in 2POST racks. Required mounting hardware is included.

Features

- 2U cantilever mount fixed shelf
- Cantilever shelf supports monitors and other equipment with a 60lb capacity
- Shelf is compatible with 2 or 4 post rack enclosure cabinets
- SRSHELF2P is 18 inches in depth but can use two shelves back to back to create a deep fixed shelf in 2POST racks
- Required mounting hardware is included

Specifications

OVERVIEW	
Model Type	Shelves
Accessories Type	Shelf
PHYSICAL	
Shipping Dimensions (hwd / in.)	4 x 20 x 21
Shipping Dimensions (hwd / cm)	10.16 x 50.8 x 53.34
Shipping Weight (lbs.)	9
Shipping Weight (kg)	4.08



Tripp Lite
1111 W. 35th Street
Chicago, IL 60609 USA
Telephone: 773.869.1234
www.tripplite.com

Unit Dimensions (hwd / in.)	3.5 x 19 x 18
Unit Dimensions (hwd / cm)	8.89 x 48.26 x 45.72
Unit Weight (lbs.)	5
Unit Weight (kg)	2.27
WARRANTY	
Product Warranty Period (Worldwide)	5-year limited warranty

© 2015 Tripp Lite. All rights reserved. All trademarks are the sole property of their respective owners. Tripp Lite has a policy of continuous improvement. Specifications are subject to change without notice. Photos may differ slightly from final products.