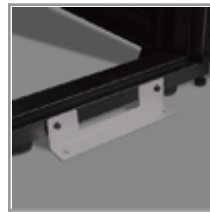


42U SmartRack Deep Rack Enclosure Cabinet with doors & side panels

MODEL NUMBER: **SR42UBDP**



Description

A DEEP version of our standard 42U SmartRack. This enclosure is 1200mm deep (48") compared to the standard 1050mm deep (42"). This extra depth allows for high density equipment installations. It allows extra space for moving the cable management back as well as providing space for mounted equipment that has hot-swap, removable power supplies out the back of the enclosure.

The SR42UBDP houses 3000 lb of standard 19-inch rack equipment in 42U. Its front and rear pairs of vertical rails have square mounting holes that are adjustable in quarter-inch increments from 4 to 42 inches. Adjustment is quick and an easy-view depth index ensures consistent rail placement without requiring time-consuming measurements. Each rack space within the enclosure is numbered for ready reference.

Two of the adjustable vertical mounting rails support toolless button-mount 0U installation of up to four compatible PDUs and cable managers. This feature makes it easier to route cabling to rack equipment and reduces cord clutter.

With its locking, reversible, removable front and rear doors, and locking, removable side panels, the SR42UBDP provides ultimate equipment safety. The side panels are half size for ease of removal and reinstallation. The split rear door design allows the enclosure to be placed closer to a wall. The SR42UBDP meets all requirements toward PCI DSS compliance.

The top panel of the SR42UBDP is vented to help remove warm air from the enclosure and draw in cool air by convection. The top panel includes ports for cable routing, and can be quickly removed without tools. To facilitate cable access, the SR42UBDP is open-bottom.

All components of the SR42UBDP are grounded to the enclosure frame. Front and rear threaded grounding points are provided for connection to the facility earth ground. The removable front and rear doors feature quick-release ground wires.

To simplify deployment, the SR42UBDP comes with preinstalled casters that enable it to be easily maneuvered into the desired location, where it can be secured by adjusting the preinstalled levelers. Note: the casters are intended for minor position adjustments and are not designed for moving the enclosure

Highlights

- 48" (1200mm) depth for mounting extra-deep equipment
- Standard 24" (600mm) width for optimizing floor space
- Ships fully assembled
- 3000 lb stationary / 2250 lb rolling load capacity
- Locking, removable, reversible front and rear doors; Locking, removable side panels keyed alike with doors
- Pre-installed casters and leveling feet; Rolls through standard 7 foot doorway
- Meets all enclosure requirements towards PCI DSS (Payment Card Industry Data Security Standard) Compliance

Package Includes

- SR42UBDP Rack Enclosure
- (4) Side panels
- (4) Side panel locks
- (2) Door & side panel keys
- (50) M6 screws
- (50) M6 cage nuts
- (50) M6 washers
- Owner's Manual



over long distances.

The SR42UBDP comes with a 5-year product warranty. As part of the SmartRack family, the SR42UBDP is compatible with Tripp Lite's extensive range of rackmount accessories, enabling you to customize your solution to meet any requirement.

Features

- Ships fully assembled for rapid deployment and roll into place on pre-installed casters (casters are removable)
- Front and rear sets of equipment mounting rails adjust in 1/4" increments. Adjustment is quick and convenient. The easy-view depth index ensures consistent rail placement without requiring time-consuming measurements.
- Toolless accessory mounting rails (2 rails per enclosure) include slots for quick installation of compatible PDUs and vertical cable managers. Mounting slots are arranged in an industry-standard pattern compatible with a wide variety of accessories. Each rail can accommodate two vertical PDUs or cable managers side-by-side (four items per enclosure).
- Enclosure includes mounting hardware of M6 cage nuts and 50 pieces of M6 screws
- Textured powder coat finish for tough resistance to environmental concerns such as deployment in warehouses.
- Massive front to rear ventilation capacity. 65+% open space in door perforation pattern meets or exceeds server manufacturer requirements.
- Maximum usable internal depth of 42 inches/1070mm (front to rear rail).
- Weight ratings of 3000 lb stationary and 2250 lb rolling.
- Front door is locking, reversible and removable.
- Rear doors are locking and reversible. Split rear door design reduces clearance requirements for service entry allowing the enclosure to be placed closer to a wall.
- Locking removable side panels are 'half size' to make them smaller and lighter improving ease of installation and servicing. Two side panels per side (4 panels total). Side panels are keyed alike to the front and rear doors.
- Built in baying tabs allow enclosures to be combined securely in rows. Center-to-center width can be set at 600mm or 24".
- Leveling feet extend to allow enclosure to be positioned on uneven floors. Levelers are removable.
- Compact design allows the enclosure to roll through standard height commercial doorways.
- Convenient grounding system. All components are grounded to the enclosure frame which includes multiple connections for facility ground. Front and rear doors include quick-release ground wires.
- Open bottom for cable access.
- Top panel has generous cable access holes. Panel can be removed toollessly in seconds without having to disconnect cables first.
- Included stabilizing brackets are used for shipment and can be reattached at the bottom of the enclosure frame on the inside or outside of the rack.
- Meets all enclosure requirements towards PCI DSS (Payment Card Industry Data Security Standard) Compliance
- Compatibility with airflow optimization accessories as well as cable management accessories.

Specifications

OVERVIEW	
Style	Floor Standing
PHYSICAL	
Installed Whole System Maximum Rack Depth (in.)	42
Installed Whole System Maximum Rack Depth (cm)	106.7



Installed Whole System Minimum Rack Depth (in.)	4
Installed Whole System Minimum Rack Depth (cm)	10.16
Rack Height (U Spaces)	42
Shipping Dimensions (hwd / in.)	84.5 x 28 x 52
Shipping Dimensions (hwd / cm)	214.63 x 71.12 x 132.08
Shipping Weight (lbs.)	345
Shipping Weight (kg)	156.49
Unit Dimensions (hwd / in.)	78.5 x 23.63 x 47.25
Unit Weight (lbs.)	315
Unit Weight (kg)	142.88
Unit Dimensions (cm)	199.39 x 60.02 x 120.01
Color	Black
Weight Capacity - Stationary (lbs.)	3000
Weight Capacity - Rolling (lbs.)	2250
Weight Capacity - Stationary (kg)	1360.8
Weight Capacity - Rolling (kg)	1020.6
Factory Preset Rack Depth (in.)	28.125
Factory Preset Rack Depth (cm)	71.44
Hinged (Swings Away from Wall Bracket)	No
SPECIAL FEATURES	
Grounding Lug	Front and Back door frames
CERTIFICATIONS	
Certifications	UL60950; RoHS; CE
NOM (Mexico)	Tested to NOM (Mexico)
Approvals	EIA/ECA-310-E
WARRANTY	
Product Warranty Period (Worldwide)	5-year limited warranty