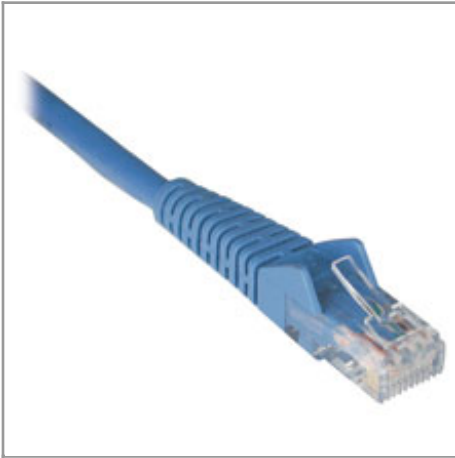


Cat6 Gigabit Snagless Molded Patch Cable (RJ45 M/M) - Blue, 7-ft. - 50 Piece Bulk Pack

MODEL NUMBER: N201-007-BL50BP



Description

With Tripp Lite's category 6 molded patch cables you can stay ahead of the game by using this high-speed cable to distribute data, voice and video. These cables deliver stable performance up to 550MHz. Each comes UL verified meets EIA/TIA Cat6 TIA/EIA-568-B-2.1 draft 9 standards. Constructed with high-quality copper wire and a staggered-pin plug design, near-end crosstalk levels are kept to a minimum. Designed for use in category 6, category 5e and category 5 applications. Cat6 cables are available in a variety of colors with a snagless boot preventing cable snags.

Features

- 50 piece bulk pack of 7-ft. Blue Cat6 patch cables
- Meets Category 6 cabling standards
- Premium cabling for Category 6, Category 5e and Category 5 applications
- Length: 7-ft. / Color: Blue / Connectors: RJ45 male
- Drastically reduce impedance & structural return loss compared to standard 100MHz wire
- High-quality copper wire and a staggered-pin plug design to keep near-end crosstalk levels to a minimum
- Feature molded connectors with integral strain relief
- Snagless design protects the locking tabs on the RJ45 connectors from being damaged or snapped off during installation
- PVC 4-pair stranded UTP
- Deliver stable performance up to 550MHz/1 Gbps communication
- Meets most current industry standards including IEEE 802.3ab, IEEE 802.5, ANSI/EIA/TIA 568, ISO/IEC 11801 and ETL (category 6 draft 11)
- Available in other colors and lengths

Highlights

- 50 piece bulk pack of 7-ft. Blue Cat6 patch cables
- Premium cabling for Category 6, Category 5e and Category 5 applications—rated for 550 MHz/1 Gbps communications
- Designed to meet Category 6 specifications; reduces cross-talk and return loss
- IEC 802.3ab
- PVC 4-pair stranded UTP
- All cables feature boots with integral strain-relief and RJ45 (Male) connectors

System Requirements

- For 1000 Base-T (1Gbps Ethernet), 10/100 Base-T (Ethernet), 100 Mbps TPDDI, 155 Mbps ATM, ISDN, voice and Token Ring TYPE 3 applications as well as EIA/TIA applications.

Package Includes

- 50 pieces of 7-ft. Blue Cat6 Gigabit Snagless Molded Patch Cables

Specifications



Tripp Lite
1111 W. 35th Street
Chicago, IL 60609 USA
Telephone: 773.869.1234
www.tripplite.com

Style	Cat6/6e/6a
Model Type	Snagless
Cable Types	CAT6
INPUT	
Cable Length (ft.)	7
Cable Length (m)	2.13
PHYSICAL	
Color	Blue
CONNECTIONS	
Connector A	RJ45 (MALE)
Connector B	RJ45 (MALE)
CERTIFICATIONS	
Certifications	RoHS-Compliant
WARRANTY	
Product Warranty Period (Worldwide)	Lifetime limited warranty

© 2015 Tripp Lite. All rights reserved. All trademarks are the sole property of their respective owners. Tripp Lite has a policy of continuous improvement. Specifications are subject to change without notice. Photos may differ slightly from final products.